



MONTHLY MEMBERSHIP PROGRESS REPORT

District 27 E1

Results as of: 06/30/2019

GMT: OPEN

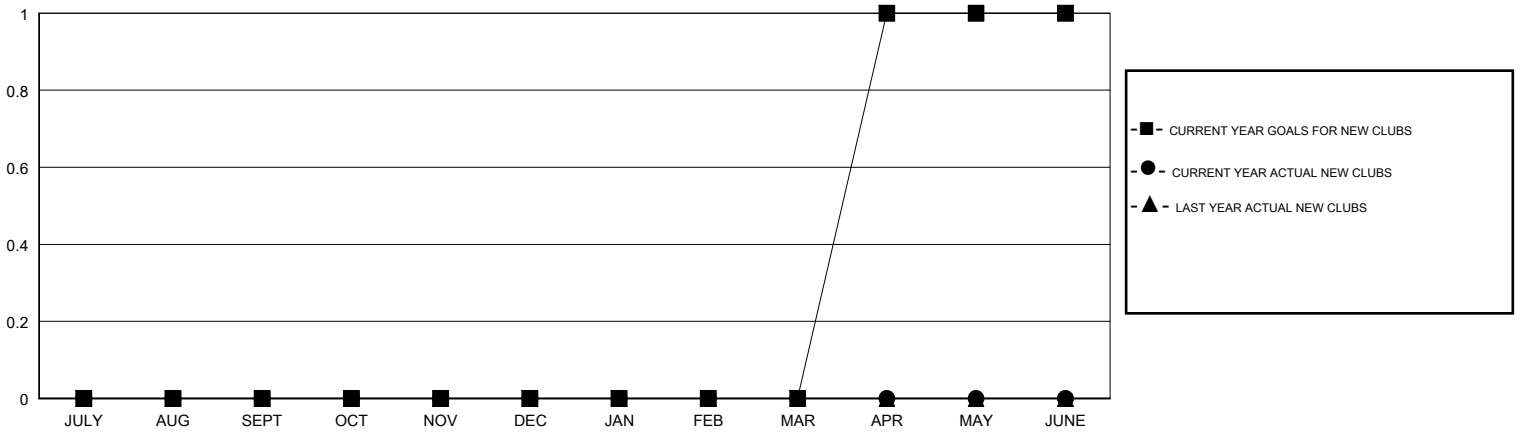
LOCATION WISCONSIN

GMT CA

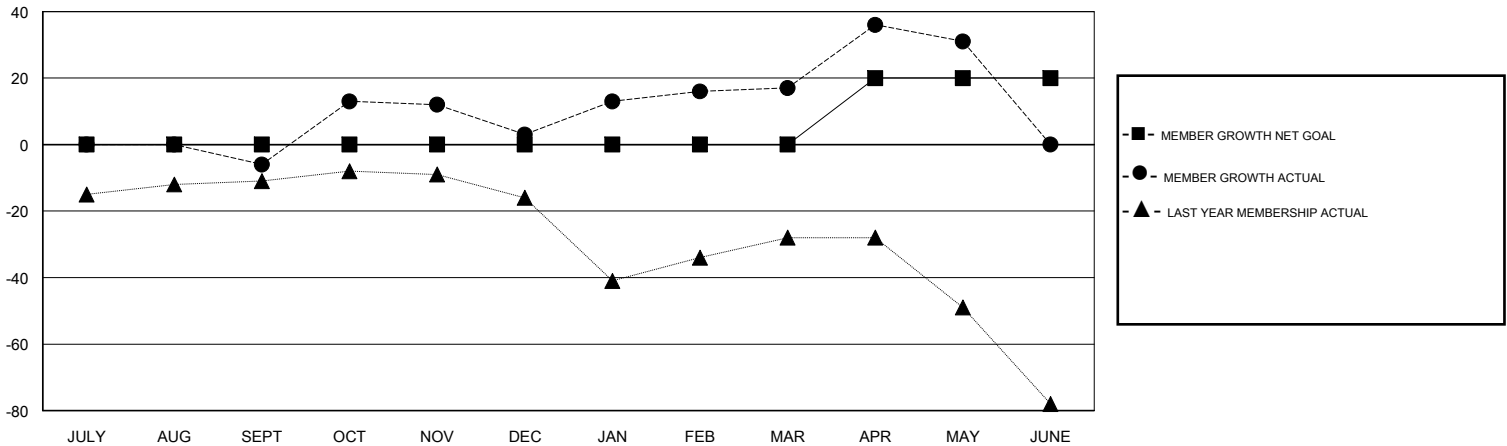
Clubs			
RESULTS FOR 2018-2019			
QUARTER	NEW CLUB GOAL	NEW CLUBS	DROPPED CLUBS
JULY/AUG/SEPT	0	0	0
OCT/NOV/DEC	0	0	0
JAN/FEB/MAR	0	0	0
APR/MAY/JUNE	1	0	0

Members			
RESULTS FOR 2018-2019			
QUARTER	MEMBER GROWTH NET GOAL	MEMBER GROWTH ACTUAL	DROPPED MEMBERS ACTUAL (including transfers)
JULY/AUG/SEPT	0	22	22
OCT/NOV/DEC	0	46	36
JAN/FEB/MAR	0	31	17
APR/MAY/JUNE	20	45	59

GOALS AND ACTUAL NEW CLUBS CUMULATIVE



GOALS AND ACTUAL MEMBERS CUMULATIVE



DROPPED CLUBS: 0	34 CLUBS OF 45 ADDED 1 OR MORE NEW MEMBERS	<u>GENDER DISTRIBUTION</u> MALE 1,119 (68.36%) FEMALE 518 (31.64%) Women Percentage Fiscal Year Goal: 33%
<u>DROPPED MEMBERS</u> DECEASED 12 CLUB CANCELLED 0 OTHER 121 TOTAL 133	CLICK HERE FOR CUMULATIVE MEMBERSHIP DATA	TOTAL FAMILY UNIT MEMBERS 471 FAMILY MEMBERS PAYING HALF DUES 238